

# microlab



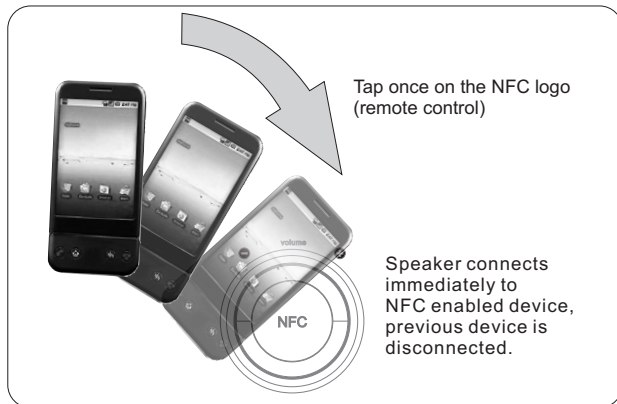
[www.microlab-global.com](http://www.microlab-global.com)  
Microlab Electronics Co., Ltd  
Made in China



## NFC (Nearfield communication)

This function allows any NFC enabled device to easily connect to the speaker system wirelessly with a single touch.

1. To use the NFC function, just tap the smartphone or NFC enabled device on the NFC logo at the top of the remote control.
2. This will connect the system to this device, and disconnect any previous connected device.
3. Once connected, you can commence the music playback as mentioned above.
4. Music will be streamed wirelessly to the speaker system.



## Important Safety Instructions



### Caution:

To reduce the risk of electric shock, do not dismantle the product and do not expose the apparatus to rain or moisture. No user-serviceable parts inside. Refer servicing to qualified personnel only.

### Explanation of Graphical Symbols:

- The lightning flash within an equilateral triangle is intended to alert you to the presence of uninsulated dangerous voltage within the product's enclosure that may be of sufficient magnitude to constitute an electric shock to a person or persons.
- The exclamation point within an equilateral triangle is intended to alert you to the presence of important operating and maintenance (servicing) instructions in the literature accompanying the product.

### WARNINGS:

1. **Read Instructions** - All the safety and operating instructions must be read before the product is operated.
2. **Retain Instructions** - The safety and operating instructions should be kept with the product for future reference.
3. **Heed warnings** - All warnings on the product and in the operating instructions should be adhered to.
4. **Follow instructions** - All operating and users' instructions should be followed.
5. **Installation** - Install in accordance with the manufacturers' instructions.
6. **Power sources** - This product should be operated only from the type of power source indicated by the marking adjacent to the power cord entry. If you are not sure of the type of power supply to your home, consult your product dealer or local power company.
7. **Grounding or polarization** - the product is not required to be grounded. Ensure the plug is fully inserted into the wall outlet or extension cord receptacle to prevent blade or pin exposure. Some versions of the product are equipped with a power cord fitted with a polarized alternating line plug (a plug having one blade wide than the other). This plug will fit onto the power outlet only one way. This is a safety feature. If you are unable to insert the plug fully into the outlet, try reversing the plug. If the plug should still fail to fit, contact your electrician to replace your obsolete outlet. Do not defeat the safety purpose of the polarized plug. When using an extension power-supply cord or a power-supply cord other than that supplied with the appliance, it should be fitted with the appropriate molded plugs and carry safety approval appropriate to the country of use.
8. **Power cord protection** - Power-supply cords should be routed so that they are not likely to be walked on, kinked or pinched by items placed on or against them, paying particular attention to cords from plugs, receptacles and the point where they exit from the appliance.
9. **Overloading** - Do not overload wall outlets, extension cords or multiple sockets, as this can result in a risk of fire or electric shock.
10. **Ventilation** - The product must be properly ventilated. Do not place the product on a bed, sofa, or other similar surface. Do not cover the product with any items such as tablecloths, newspapers, etc.
11. **Heat** - The product should be situated away from heat sources such as radiators, heat registers, stoves, or other products including amplifiers that produce heat. No naked flame sources, such as lighted candles, should be placed on the product.
12. **Water and moisture** - To reduce the risk of fire or electric shock, do not expose the product to rain, dripping, splashing or excessive moisture such as in a sauna or bathroom. Do not use this product near water, for example, near a bathtub, washbowl, kitchen sink, laundry tub, in a wet basement, or near a swimming pool, or etc.
13. **Object and Liquid Entry** - Never push objects of any kind into this product through openings, as they may touch dangerous voltage points or short-circuit parts that could result in a fire or electric shock. Never spill liquid of any kind on the product. Do not place any object containing liquid on top of the product.
14. **Cleaning** - Unplug the product from the wall outlet before cleaning. The cabinet of the subwoofer may be cleaned by dusting with a dry cloth. If you wish to use an aerosol cleaning spray, do not spray directly on the cabinet; spray onto the cloth. Be careful not to damage the drive units.
15. **Attachments** - Do not use attachments not recommended by the product manufacturers, as they may cause hazards.
16. **Accessories** - Do not place this product on an unstable cart, stand, tripod, bracket or table. The product may fall, causing serious injury to a child or adult, and serious damage to the product. Use only with a cart, stand, tripod, bracket or table recommended by the manufacturer or sold with the product. Any mounting of the product should follow the manufacturers' instructions and should use a mounting accessory recommended by the manufacturer.
17. **Moving the product** - A product and cart combination should be moved with care. Quick stops, excessive force and uneven surfaces may cause the product and cart combination to overturn.
18. **Un-use periods** - The power cord of the device should be unplugged from the outlet during lightning storms

or when the apparatus is left unused for a long period of time.

19. **Servicing** - Do not attempt to service this product yourself, as opening or removing covers may expose you to dangerous voltage or other hazards. Refer all servicing to qualified service personnel.
20. Please remove the power plug from the main power source or wall power source when not in use. When plugged in to a power source, the system is in standby mode, so the power is not entirely cut off.
21. **Replacement parts** - When replacement parts are required, ensure the service technician has used replacement parts specified by the manufacturer or have the same characteristics as the original part. Unauthorized substitutions may result in fire, electric shock or other hazards.
22. **Mains fuses** - For continued protection against fire hazard, use fuses only of the correct type and rating. The correct fuse specification for each voltage range is marked on the product.
23. Do not turn up the volume while listening to a section with very low level inputs or no audio signals. If you do, the speaker may be damaged when a peak level section is suddenly played.
24. The only means of completely disconnecting the product from the power supply is by removing the power cord from the wall outlet or the product. The wall outlet or the power cord entry to the product must remain freely accessible at all times while the product is in use.
25. Try to install the product near a wall socket or extension cord and shall be easily accessible.
26. The highest environmental temperature suitable for this product is 40°C.

## Introduction

Incorporating *Bluetooth*® technology for wireless music entertainment. This system lets you connect to your mobile phone or media player without cables. Using A2DP or AVRCP profiles, it lets you listen to stereo music by connecting to any *Bluetooth*® enabled device. Designed with beautiful leather finishes, this versatile stereo system fits perfectly in your living room, computer room or even your bedroom. Bass reflex tunnel design means deeper bass effects. Classic bookshelf stereo speaker arrangement creates better dynamic sound movements for realistic effects. Ideal for digital movies, TV, PC / notebooks, CD / DVD and multimedia application. Comes with two audio input methods, wireless *Bluetooth*® music transfer and traditional audio connection. Features advanced non-contact connection using NFC technology with any NFC enabled product.

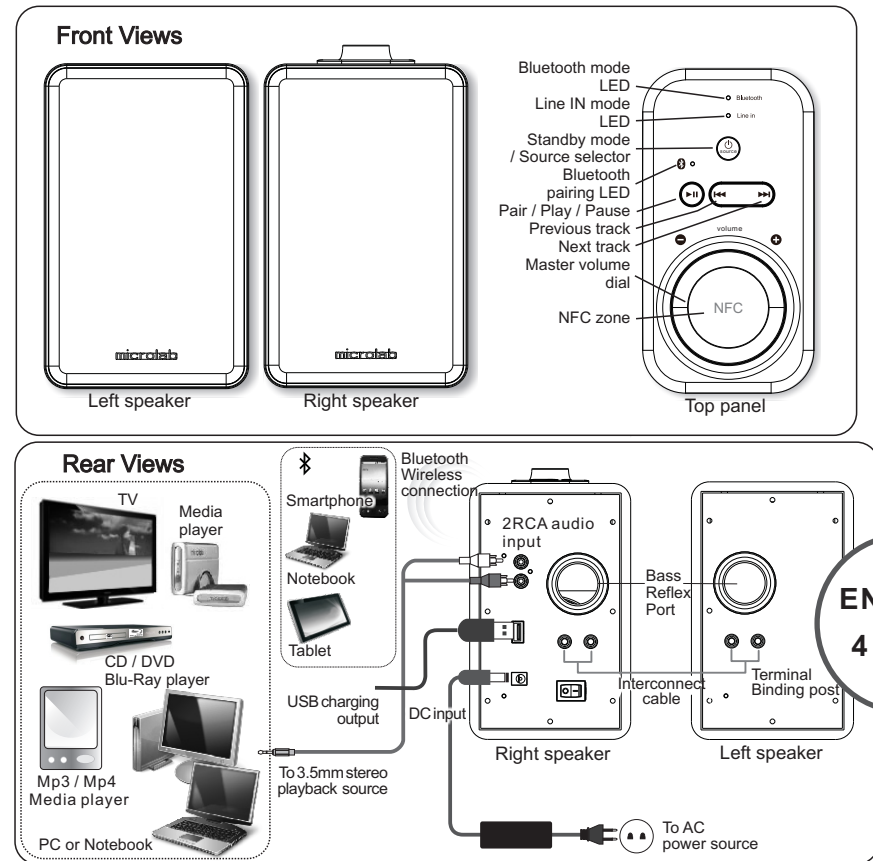
## Features

- Wireless *Bluetooth*® music entertainment; playback from any *Bluetooth*® devices
- Bookshelf stereo speakers for all room types such as living room, kitchen, bedroom, etc.
- *Bluetooth*® A2DP profile supported for wireless music streaming
- *Bluetooth*® AVRCP profile supported for mobile phone remote control
- Powerful and clear sound with built-in amplifier
- Treble and bass sound effects
- Full range sound spectrum for all type of accurate music reproduction
- Support alternative analog 3.5 mm stereo connection to traditional media players
- High fidelity terminal binding posts for clearer sound and minimum noise

## Package contents

- |                               |       |
|-------------------------------|-------|
| • H21 speakers                | 2 pcs |
| • Speaker interconnect cable  | 1 pc  |
| • AC/DC power adapter         | 1 pc  |
| • 3.5 mm stereo to 2RCA cable | 1 pc  |
| • User manual                 | 1 pc  |


## Illustrations



## Connections

1. Turn on the main AC power and Power switch. The system will initiate standby mode with no LED illumination
2. Depress the button with the Standby icon to activate the Source selection mode. The default mode is *Bluetooth*® wireless. You can depress again to select between *Bluetooth*® or LINE IN modes.
3. Depress the same button for several seconds and the system will return to Standby mode.
4. In *Bluetooth*® mode, if no pairing occurs for 20 minutes, the Standby mode will be activated.
5. In LINE IN mode, if no pairing occurs for 20 minutes, the Standby mode will be activated.
6. Depress the SOURCE button once to initiate the *Bluetooth*® wireless mode. (For previously paired device, the system will remember its last volume level setting)
7. The *Bluetooth*® LED lit up in blue, and the pairing sequence initiates after 10 seconds with *Bluetooth*® Sync LED blink between red and blue colours rapidly. The *Bluetooth*® mode is the default source selection.
8. Immediately pair and connect with your *Bluetooth*® music device. Once paired, the *Bluetooth*® LED will remain lit steadily. (Skip this step if "H21" remembered your device).
9. To activate the pairing sequence anytime, depress the Pair/Play/Pause button for 3 seconds or more. The pairing sequence will commence and search for any Bluetooth enabled device.
10. This product supports NFC connection method, please refer to the NFC paragraph for more information.

## Connections

-  Bluetooth
-  Line in

Bluetooth® LED lit up - SOURCE button depressed



Pairing sequence begin after 10 seconds.  
The system will detect previous paired device within the first 10 seconds.  
Blink: red and blue rapidly

### iPhone, iPad, or iPod

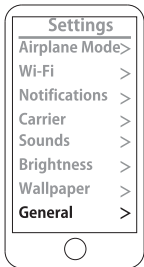
go to SETTINGS > GENERAL > enable BLUETOOTH > select "H21"

### Android Phone

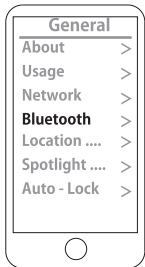
go to SETTINGS > WIRELESS & NETWORKS > enable BLUETOOTH > select "H21"

### Others

read the instruction manual included with your device (enter the pairing code "0000" if prompted)



go to setting page



select Bluetooth setting



turn on Bluetooth & select "H21"



pair and connect "H21"



Paired successfully will blink once every 5 to 6 seconds

(To remember your device profile: User have to disconnect the H21 once during initial use)

9. **Change the Bluetooth playback device**, simply turn off the Bluetooth signal in the first playback device. Depress the playback button at the top panel for several seconds to disconnect the previous Bluetooth device. The system will restart the pairing sequence again.



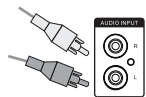
Press & hold the Pair/Play/Pause button for about 3 seconds



LED blink between red and blue colours rapidly

### Connections (Wired Audio)

1. Connect the playback device to the RCA input interfaces with the included cable. These are located at the rear panel of the right speaker.



Connect the RCA input



Connect the playback device

2. Press the source button and the Line IN LED lit up. The system is now ready to receive audio via wired connection from your media



Press the source button to switch Bluetooth mode

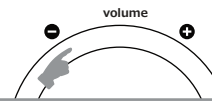
 Bluetooth

 Line in

Line in LED lit up

## Operations

1. **Volume dial** can be rotated to increase or decrease the volume level with the blue LED blinking as you turn. Once the level hit either range limits, the blue LED will pause.



2. **Control buttons** on the top panel can control the music playback directly from the Bluetooth device. PLAY/PAUSE button can initiate playback or stop on the playback device. Fast Forward button will skip to the next track, and Fast Backward for skipping to previous track. The remote control functions work on Bluetooth devices supporting **AVRCP** profile only. Compatible with a) iOS 4.1 or later, Android 1.5 or later, and Windows Mobile 5.0 or later systems.
3. **USB charger port** lets you charge your media player/phones via a USB type A interface. For charging method, please refer to your media player instruction manual.

## Technical Information

### AMPLIFIER

Total Power:	36 Watt RMS
Power distribution:	18 Watt x 2
Harmonic distortion:	< 0.5 % 1 W 1 kHz
Frequency response:	50 Hz - 20 kHz
Signal/Noise ratio:	> 75 dB
Separation:	> 45 dB

### Speakers

Tweeter driver type:	1"
Tweeter impedance:	4 Ohm
Woofer driver type:	3.5"
Woofer impedance:	8 Ohm

### Interfaces

Output:	Terminal binding posts
Input:	Bluetooth® 4.0, A2DP and AVRCP profiles, 2RCA

## Frequently Asked Questions (FAQ)

Questions	Answers
Low volume output	Check the media source own volume level, adjust to about mid volume range and listen.
	Adjust speaker's own volume level to mid range and listen
No Sound	Check if the audio source is properly connected or media player's playback has started
	Ensure volume is correctly set
	Correct digital music format is used, e.g., Mp3
Static sound heard	Ensure playback track is of proper and higher bit rate, too much compression will increase noise level